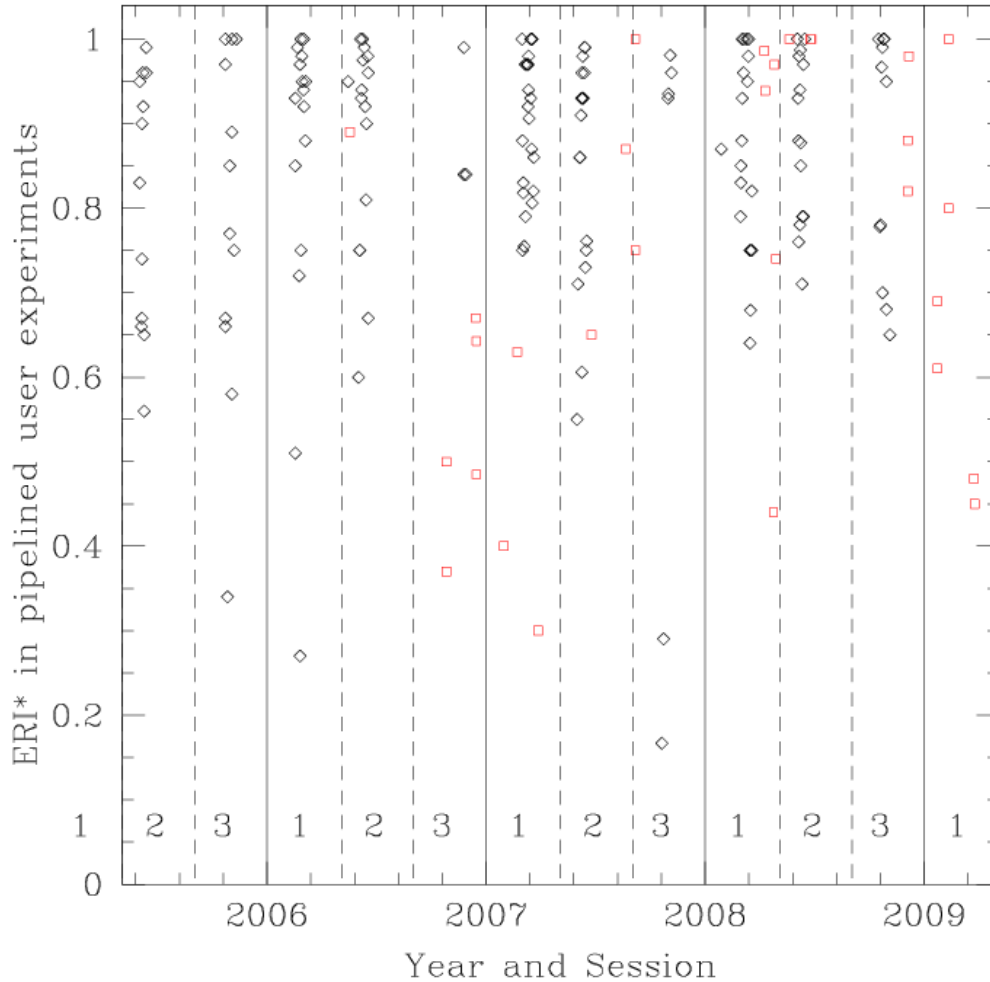


Network Reliability

Jun Yang, JIVE
April 17, 2009



ERI* vs. Time



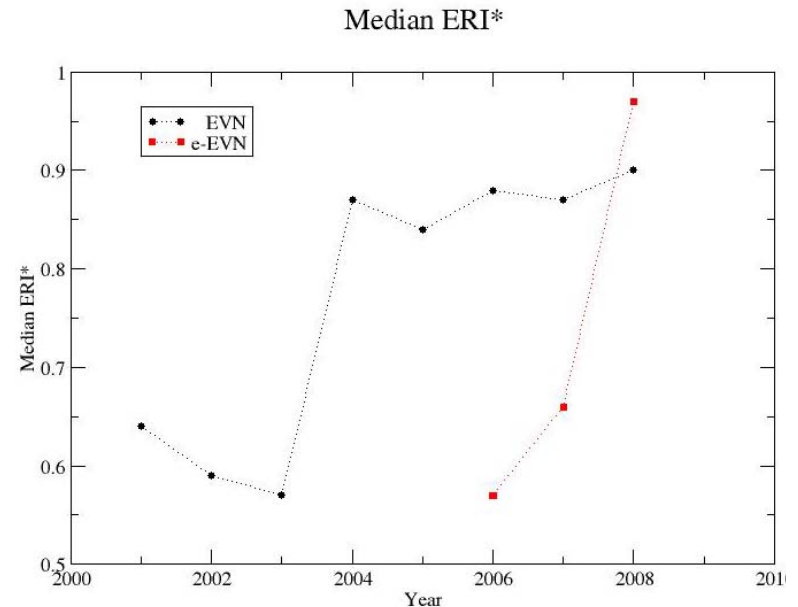
Median ERI* for 2007 = 0.87

Median ERI* for 2008 = 0.90

session 1/2008 = 0.83

session 2/2008 = 0.88

session 3/2008 = 0.95



Network Reliability

(Sessions: 3/2008)

- Successfully carried out four 1024 Mbps experiments (GW019B, EF021A, EF021B, & GP047).
- Detected fringes to all the participated stations (Ef, On, & Nt) in the first 7 mm NME experiment N08Q1.
- Yebes 40m radio telescope started to perform the observations at 13/3.6 and 1.3 cm.
- QUASAR stations participated three EVN experiments (EK028A, EK028B, & EK028C).
- Wb: MK5B formatter gave error 'Mark5B sync error gt_3' in GP047, EF021A, and EK028B.
- Ur: no fringes in N08X1 and GW019B due to the wrong LO frequency (found after the observations).
- Sh: No fringes at 1.3 cm due to poor pointing caused by loose screws (found and solved after the session).
- On: Missed four observations at 6 cm due to too much wind and mechanical problems.